

WinPLC7 - PROGRAMMING SOFTWARE AND SIMULATION TOOL



WinPLC7

- Programming in AWL, FUP and KOP
- Integrated PLC program analyzer
- Integrated software PLC for offline simulations
- Graphical hardware illustration and simulation
- Import and export of S7[®] programs from Siemens
- Online connections via MPI-adapter, Ethernet, TCP/IP and VIPA „Green Cable“
- Display of face plan, program structure and cross-reference list
- Clear project logging
- Automatic insertion of symbols, parameters and DB-variables at programming
- Convenient hardware configuration of VIPA systems 100V, 200V, 300V, 300S, 500S incl. SPEED-Bus modules and S7[®]-300 control units from Siemens
- Profibus-DP-configuration for Siemens and VIPA controllers
- Diagnosis from Profibus-DP networks
- Configuration of TCP-connections for VIPA Ethernet controllers
- Supported operating systems: Windows 98SE/ME/2000/XP

Models:

- SW873** WinPLC7 - complete version tool for STEP[®]7 from Siemens programming, testing, diagnosis and simulation software for VIPA systems 100V, 200V, 300V, 300S, 500S and S7-300/400 from Siemens, STL-, FBD- and LAD programming, company licences or multiple licences upon request!
- SW873KEY** WinPLC7 - complete version tool for STEP[®]7 from Siemens programming, testing, diagnosis and simulation software for VIPA systems 100V, 200V, 300V, 300S, 500S and S7-300/400 from Siemens, STL-, FBD- and LAD programming, company licences or multiple licences upon request!

WinNCS - PARAMETERIZATION TOOL



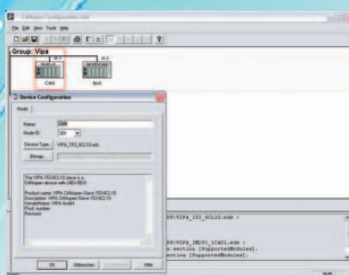
WinNCS

- Profibus-DP and Ethernet parameterization/configuration of VIPA control units and communication processors
- Administrative network functions in Ethernet network
- Identification and display of all participants in a local TCP/IP network
- Display of single and total state of TCP/IP connections
- Comprehensive state-recording possibilities
- Test and diagnostic function via standard web client in connection with VIPA controllers • Access administration by TCP/IP address lists
- Importing function of VIPA GSD files and GSD files from third-party manufacturers
- Supported operating systems: Windows 98SE/ME/NT/2000/XP

Models:

- SW880** WinNCS - Universal parameterization and configuration tool (Windows 98/ME/NT/2000) - WinLP (System 200V, Label Print) - Ethernet protocols (TCP/IP, SINEC H1, IPK, RFC1006) - Profibus-DP (2BF)
- HB91D** Manual WinNCS, German
- HB91E** Manual, WinNCS, English

WinCoCT



CANopen

WinCoCT

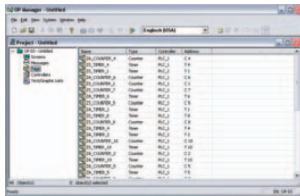
- Configuration of CANopen networks with VIPA system components
- Graphic user interface
- Supporting German and English language
- Transmission rate up to 1Mbaud adjustable
- Configuration of up to 127 CANopen Slave modules
- Supported operating systems: Windows 2000 and XP

Models:

- SW900** WinCoCT - CANopenConfiguration-Tool

VIPA Software

OP-MANAGER



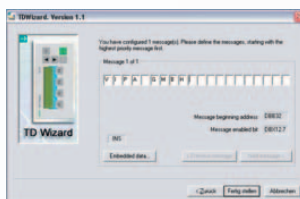
OP-Manager

- Parameterization tool for VIPA OP 03 and CC 03
- Clear and intuitional graphic user interface
- Integrated offline simulations
- Supporting German, English, Spanish, French and Italian language
- Transmission of parameters via standard PC-RS232C interface in the VIPA OP03 and CC03 via „Green Cable“
- Supported operating systems: Windows 2000 and XP

Models:

SW910 Parameterization tool for OP 03 and CC 03

TD-WIZARD



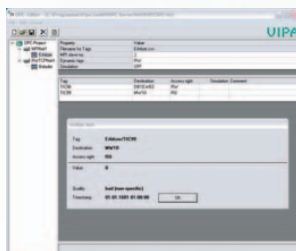
TD-Wizard

- Parameterization tool for VIPA TD 03 and TD 200 from Siemens
- TD-Wizard password protection
- Complete saving of parameters defined in TD-Wizard
- Importing possibility of generated DBs into the STEP®7 HW-manager from Siemens
- Takeover of time and variables from the CPU
- Supporting German and English language
- Free of charge in connection with VIPA TD 03 text display
- Supported operating systems: Windows 2000 and XP

Models:

SW610 Parameterization tool for TD 03

OPC-SERVER



OPC-Server

- Standardized interface between hardware controllers and software applications of different manufacturers based on OPC Data Access V1.0 and V2.0
- Modular driver connection - MPI, TCP/IP and RFC1006
- Project planning in OPC-Editor or in OPC-Client
- Integrated simulation mode
- Inclusive OPC-Client test software
- RFC1006 and TCP/IP communication via Standard-Ethernet network interface cards
- Remote connection of additional OPC-Clients via Standard-Ethernet network interface cards
- Supported operating systems: Windows NT, 2000 and XP

Models:

SW860M MPI-driver licence
 SW860R RFC1006-driver licence
 SW860T TCP/IP-driver licence (Read/Write)
 HB45D Manual OPC-Server, German
 HB45E Manual OPC-Server, English

PLC AGENT-PRO - PLC-ANALYZER



PLC-Agent-pro

- Data registration via MPI-/Profibus-DP or AS511-interface
- Recording of PLC signals (E, A, M, T, Z, D)
- Cycle-specific recording without changes in the PLC program
- Display of bit, byte, word and double word
- Display of byte operands in hexadecimal
- Display of double words in floating point format
- Convenient comparison functions of signals
- Clear time-measuring functions
- Marking possibilities within the signal
- Transmission of SMS in case of failure
- Drivers for STEP®5 and STEP®7 programmable controllers from Siemens and VIPA already included in the basic package
- Comprehensive trigger definitions in S7®-AWL
- Supported operating systems: Windows 98SE/ME/2000/XP

Models:

SW980 PLC-Agent-pro
 SW981 PLC-Agent-pro for WinPLC7

MOVICONX REAL FLEXIBLE



Operating system Windows CE 5.0 inclusive MoviconX® - Real Flexible!

- XML and web services technology
- Animated templates with appealing graphic functions
- Graphical interface with standardized XP-object library
- Recipe administration based on relational data bases
- Effective alarm management
- Historical event archive based on relational data bases
- SMS and E-Mail administration
- Historical and dynamic trends
- Conformity to FDA 21 CFR part 11
- Passwords with 1.024 user levels and 16 access areas
- Complete VBA support
- Data Logger via ADOCE
- Access to web server via web browser supporting Java
- Extensive driver library
- Comprehensive symbol library
- Importing function for STEP®7 from Siemens for Symbol-Data-Format (SDF)
- Multiterminal use
- Automatic reconnect
- Multilingual Editor, Runtime in any language
- Project planning independent from resolution
- Supported operating systems: Windows 2000/2003 Server/XP (Editor)
- Supported operating system: Windows CE 5.0 (Runtime)

Models:

SW920 MoviconX-Editor for Windows CE 5.0

ADDITIONAL SOFTWARE COMPONENTS



Additional software components

SW355 Projecting package for VIPA FM 355 temperature control modules
SW800 Manuals & More, complete documentation on CD-Rom